

NELSON

222-230 WALNUT ST., PHILADELPHIA, PA 19106

HATCH LEGEND:

- FLOOR COMMON
- BUILDING COMMON
- CORE
- OCCUPIED RELEASE PREMISES

BOMA AREA CALCULATIONS

FLOOR GROSS	8,746 SQ.FT.
FLOOR CORE	900 SQ.FT.
FLOOR USABLE	7,636 SQ.FT.
FLOOR RENTABLE	7,845 SQ.FT.
FLOOR COMMON	209 SQ.FT.
BUILDING COMMON	1,078 SQ.FT.
OCCUPIED RELEASE PREMISES USABLE	0 SQ.FT.
OCCUPIED RELEASE PREMISES RENTABLE	0 SQ.FT.

EXHIBIT B-1-D

OCCUPIED RELEASE PREMISES

AMERICAN FINANCIAL
REALTY TRUST

FLOOR AREA MEASUREMENTS

SOUTH BOSTON

BANK OF AMERICA
606 BROAD STREET
SOUTH BOSTON, VA

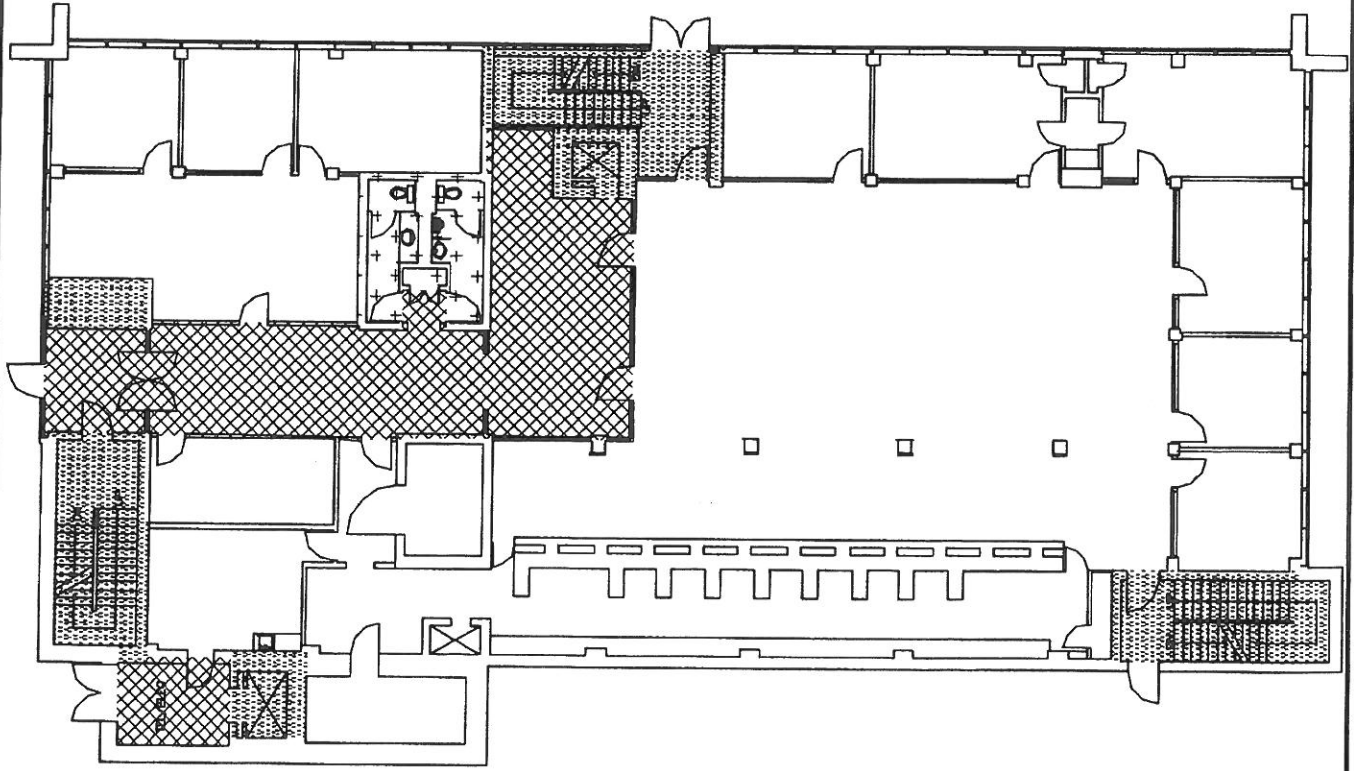
PROPERTY ID: VASOUB000

SCALE: NTS
DATE: 07/16/2003

NELSON
V: 215-925-6562
FAX: 215-925-9251

1

FLOOR #:



NELSON

222-230 WALNUT ST., PHILADELPHIA, PA 19106

HATCH LEGEND:

-  FLOOR COMMON
-  BUILDING COMMON
-  CORE
-  LEASED PREMISES

BOMA AREA CALCULATIONS

FLOOR GROSS	8,753 SQ. FT.
FLOOR CORE	805 SQ. FT.
FLOOR USABLE	6,199 SQ. FT.
FLOOR RENTABLE	7,947 SQ. FT.
FLOOR COMMON	1,749 SQ. FT.
BUILDING COMMON	104 SQ. FT.
LEASED PREMISES USABLE	0 SQ. FT.
LEASED PREMISES RENTABLE	0 SQ. FT.

EXHIBIT B-1-A LEASED PREMISES

AMERICAN FINANCIAL
REALTY TRUST

FLOOR AREA MEASUREMENTS

SOUTH BOSTON

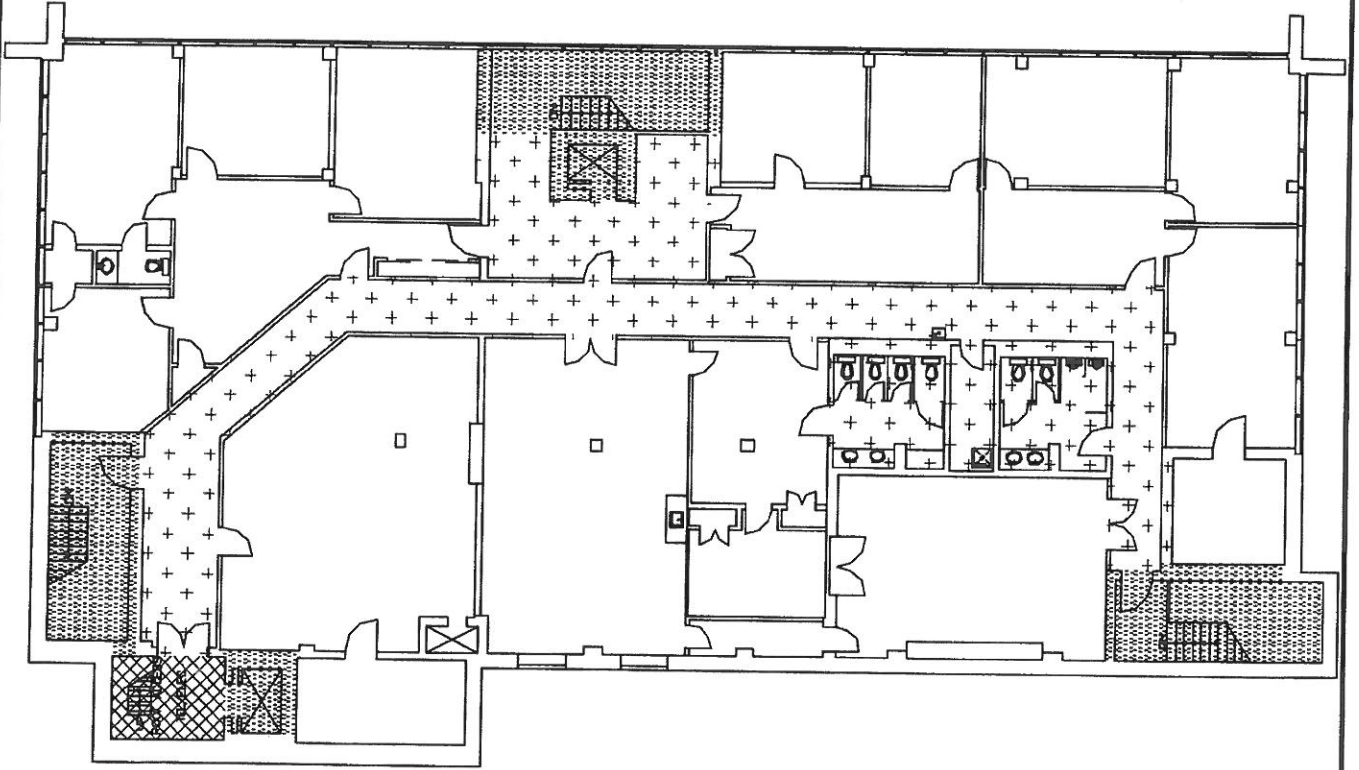
BANK OF AMERICA
606 BROAD STREET
SOUTH BOSTON, VA

PROPERTY ID: VASOUB000

SCALE: NTS
DATE: 07/16/2003

NELSON
V. 215-925-6562
FAX: 215-925-9251

2
FLOOR #:



BoA = 100%
100%

NELSON

222-230 WALNUT ST., PHILADELPHIA, PA 19106

HATCH LEGEND:

- FLOOR COMMON
- BUILDING COMMON
- CORE
- LEASED PREMISES

DOMA AREA CALCULATIONS

FLOOR GROSS	269 SQ. FT.
FLOOR CORE	0 SQ. FT.
FLOOR USABLE	269 SQ. FT.
FLOOR RENTABLE	269 SQ. FT.
FLOOR COMMON	0 SQ. FT.
BUILDING COMMON	0 SQ. FT.
LEASED PREMISES USABLE	269 SQ. FT.
LEASED PREMISES RENTABLE	269 SQ. FT.

EXHIBIT B-1-A

LEASED PREMISES



AMERICAN FINANCIAL
REALTY TRUST

FLOOR AREA MEASUREMENTS

SOUTH BOSTON MORTGAGE BANK
BANK OF AMERICA
606 BROAD STREET
SOUTH BOSTON, VA

PROPERTY ID: VASOUB000

SCALE: NTS
DATE: 07/18/2003

NELSON
V: 215-925-6562
FAX: 215-925-9251

MB

FLOOR #:

